



The Public Schools of Brookline

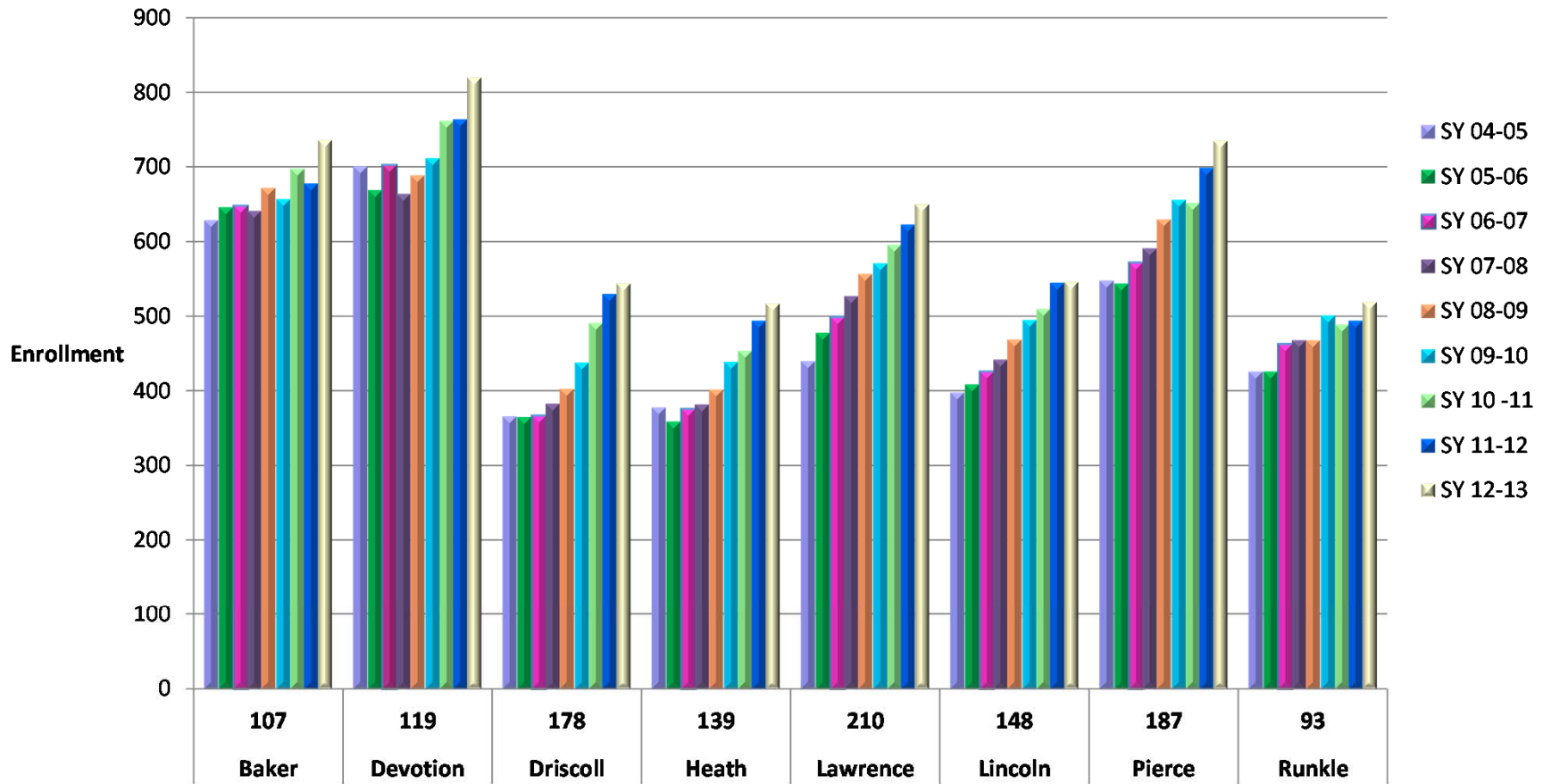
Enrollment and
Classroom Demand
History and Projection

January 14, 2013

Goals of Medium/Long Term Facilities Development

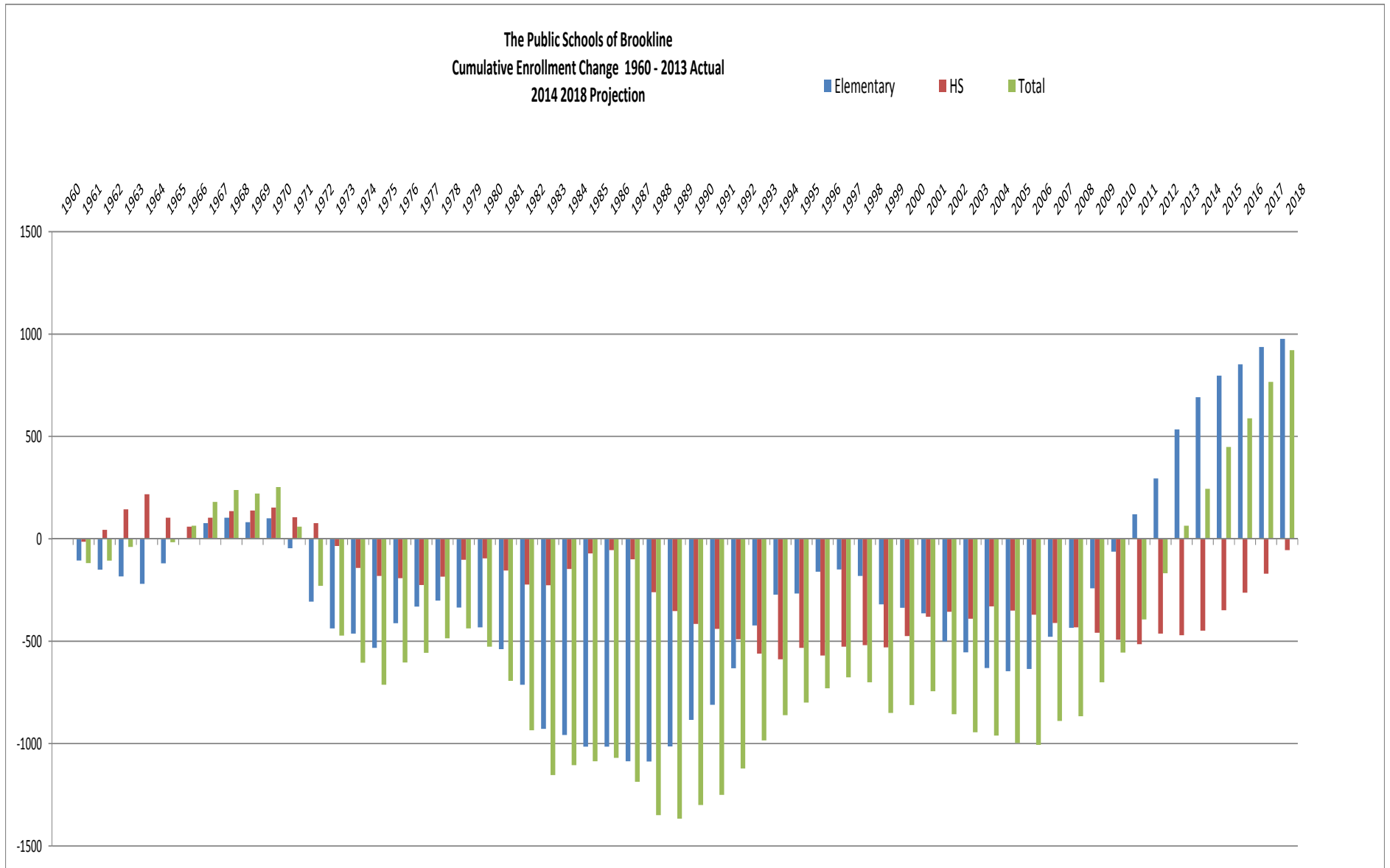
- ❑ Maintain Reasonable Class Sizes
- ❑ Avoid Compromising the Educational Program
- ❑ Plan the necessary short-term Measures needed to enhance the Long Term Vision
- ❑ Long Term – Return the Pre-K's back to the Pre-K-8 Schools
- ❑ Pay attention to Common Spaces – Future Adaptations
- ❑ Retain METCO and Staff Materials Fee Program
- ❑ Study/Research appropriate sizes for School Facilities

Historical Enrollments by School FY05 - FY13

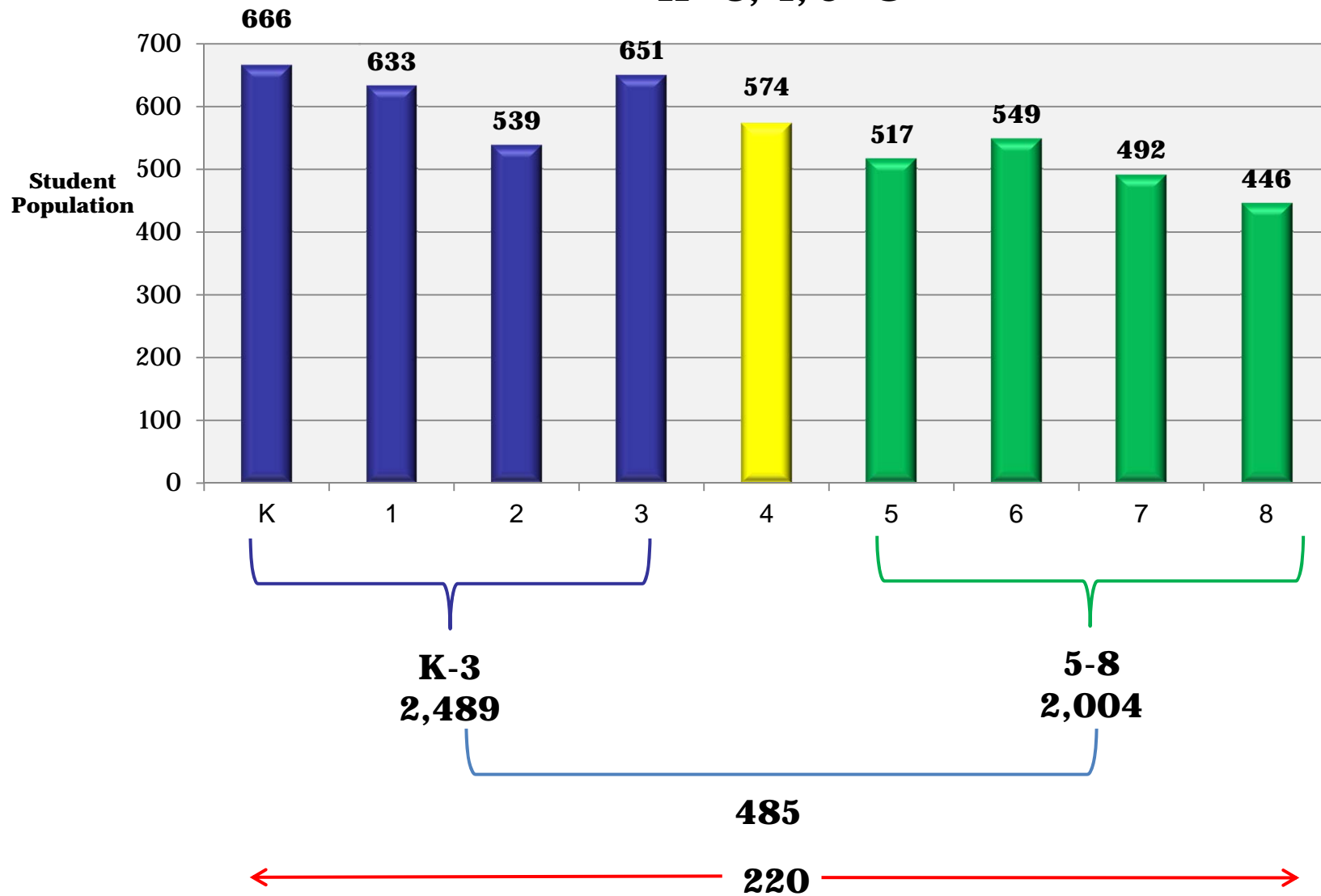


School by School Year

Total Enrollment Growth FY05 - FY13 = 1,181



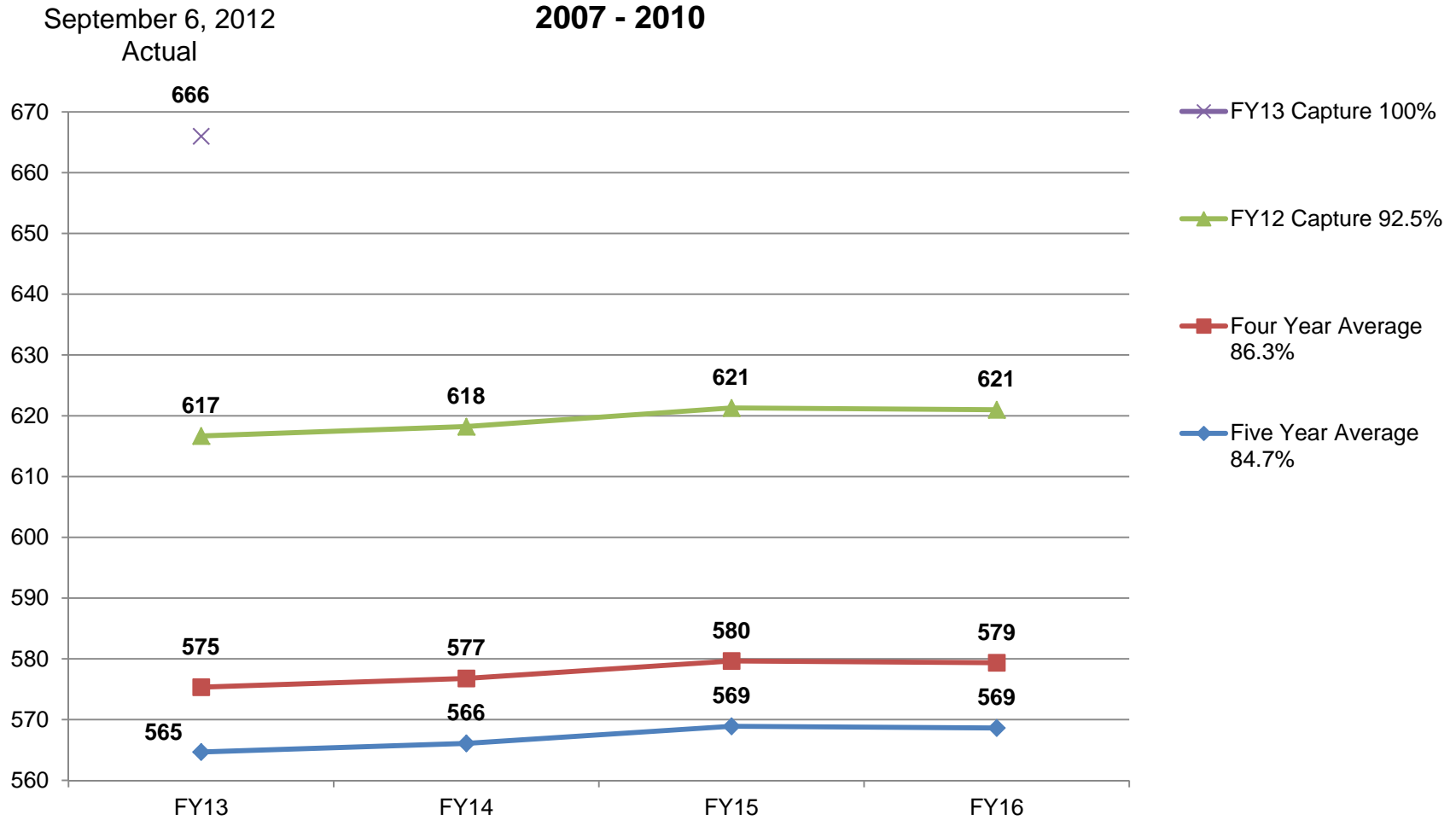
Elementary Enrollment Growth FY13 K - 3, 4, 5 - 8



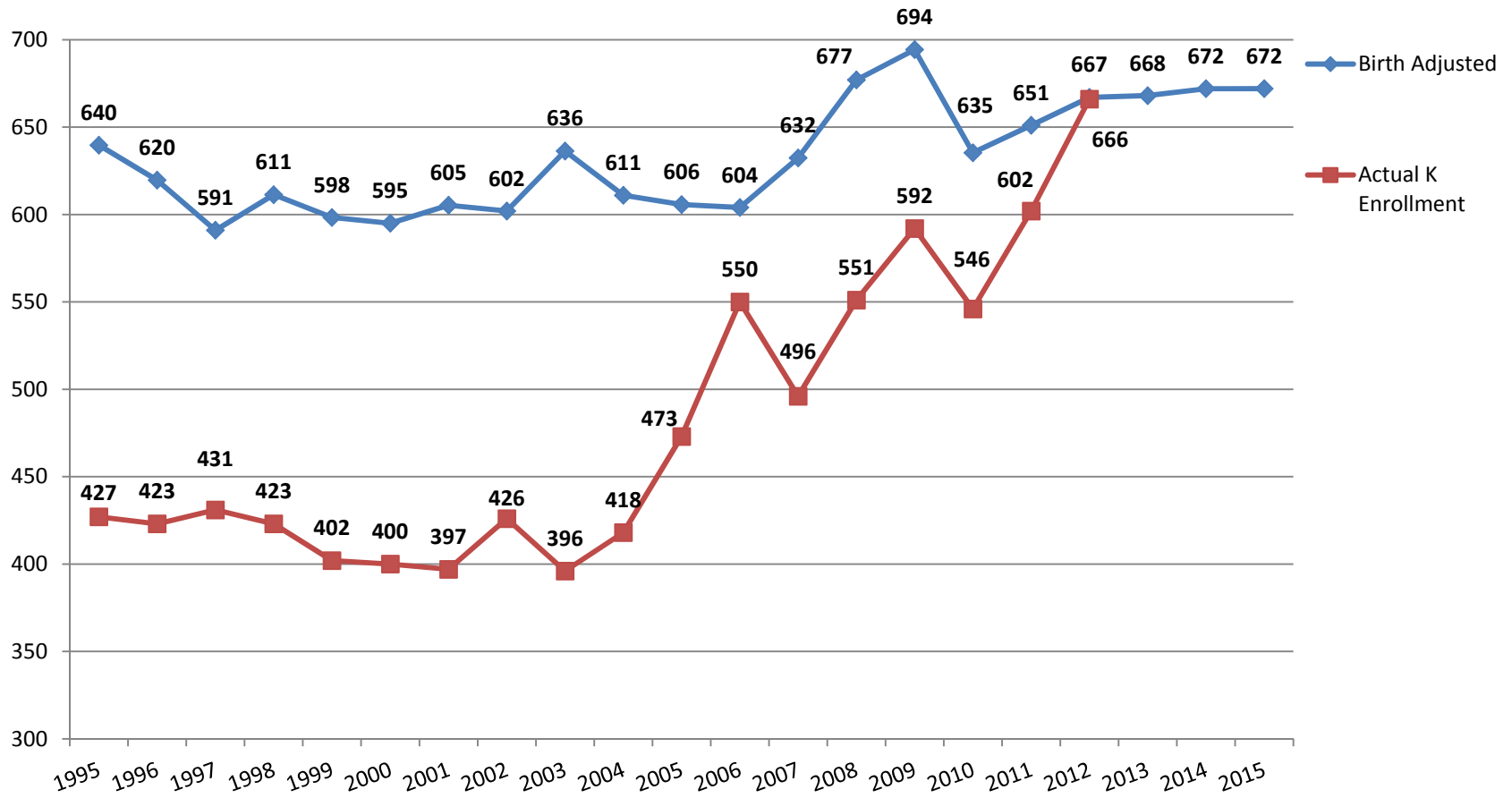
Preliminary FY13 K-8 Enrollment

	K	1	2	3	4	5	6	7	8	Total	FY12	FY11	FY10
Baker	20 20 20 20 19	20 19 21 19 19	19 18 19 20 20	20 21 20 21 20	23 22 22 22 22	19 18 19 19 18	20 19 19 18	20 20 20	20 21 20	736			
Devotion	20 20 20 17 18 20	21 20 21 20 21	20 20 19 20	23 23 24 24	22 22 22 22	22 22 22 22	20 23 23 23	21 22 19 19	18 22 23 20	820			
Driscoll	22 19 22	21 22 22	24 23 23	25 25 24	21 20 20	19 20 20	24 25	19 19 18	24 23	544			
Heath	22 23 24	19 19 19	19 19 19	24 23 23	20 19 20	23 24	19 17 17	25 25	21 19 15	517			
Lawrence	21 21 21 22	23 23 23 23	22 20 22	22 23 23 23	22 21 23	19 20 20	23 24 23	24 22 23	18 18 18	650			
Lincoln	19 19 19 18	22 23 23	21 21 20	22 22 23	23 21 24	22 21 19	19 20 19	18 14 17	20 17	546			
Pierce	23 23 23 22	24 23 24 22	22 22 21 21	21 22 22 22	21 21 21 22	23 23 21	22 23 23 22	18 17 19 18	21 22 21	735			
Runkle	23 23 23	19 20 18	22 23	21 23 22	20 18 20	20 20 20	22 21 21	18 19 18	23 22	519			
TOTALS	666	633	539	651	574	517	549	492	446	5067	4827	4652	4469
<p style="text-align: center;"> K thru 3 = 2489 5 thru 8 = 2004 240 175 183 Annual Growth </p> <p style="text-align: center;">← 485 →</p>													

Projected K Enrollment FY13 - FY16 Based on Births 2007 - 2010



History of K Enrollment Compared to Births (Adjusted for September 1 Eligibility)



K-8 Sections FY08 – FY13

	K	1	2	3	4	5	6	7	8	TOTAL
FY08 Sections	25	27	24	23	22	23	21	20	20	205
FY09 Sections	27	25	27	26	22	22	22	20	20	211
FY10 Sections	28	27	25	27	26	22	22	22	20	219
FY11 Sections	26	28	27	25	27	25	22	22	22	224
FY12 Sections	29	26	28	27	25	26	25	22	22	230
FY13 Sections	32	30	26	29	27	25	26	25	22	242
Growth FY08 – FY13	7	3	2	6	5	2	5	5	2	37

Brookline K-8 Classrooms Utilized

	Classroom Demand										Net Growth FY08 - FY13	Net Growth FY13 - FY17	Net Growth FY08 - FY17
	FY08	FY09	FY10	FY11	FY12	FY13	FY14	FY15	FY16	FY17			
Baker	33	32	32	32	33	37	39	41	42	43	4	6	10
Devotion	34	35	35	35	36	39	41	43	45	47	5	8	13
Driscoll	19	21	22	23	24	25	26	26	27	27	6	2	8
Heath	20	21	22	23	24	25	25	26	26	27	5	2	7
Lawrence	26	26	28	29	29	30	31	32	33	34	4	4	8
Lincoln	21	23	24	25	26	27	29	30	31	32	6	5	11
Pierce	28	29	31	32	33	34	35	35	35	36	6	2	8
Runkle	24	24	25	25	25	25	26	26	26	26	1	1	2
TOTALS	205	211	219	224	230	242	252	259	265	272	37	30	67
Annual Growth =	6	8	5	6	12	10	7	6	7				
Note: Assumes 32 K Sections in FY14-FY17													

The Public Schools of Brookline					
Space Needs / Options					
Elementary					
	FY14	FY15	FY16	FY17	FY18
Pre-K-8 Elementary					
– Additional Classrooms	10	7	6	7	?
– Temple Ohabei Shalom	*	*	*	*	*
– Temple Kehillath Israel (KI)	-	-	*	*	*
– Temple Emeth	*	*	*	*	*
– 9th School Model?	-	-	*	*	*
– Old Lincoln	*	*	-	-	-
– Baldwin School					
– Pine Manor College					
– Public Housing Growth					

* = Available Space

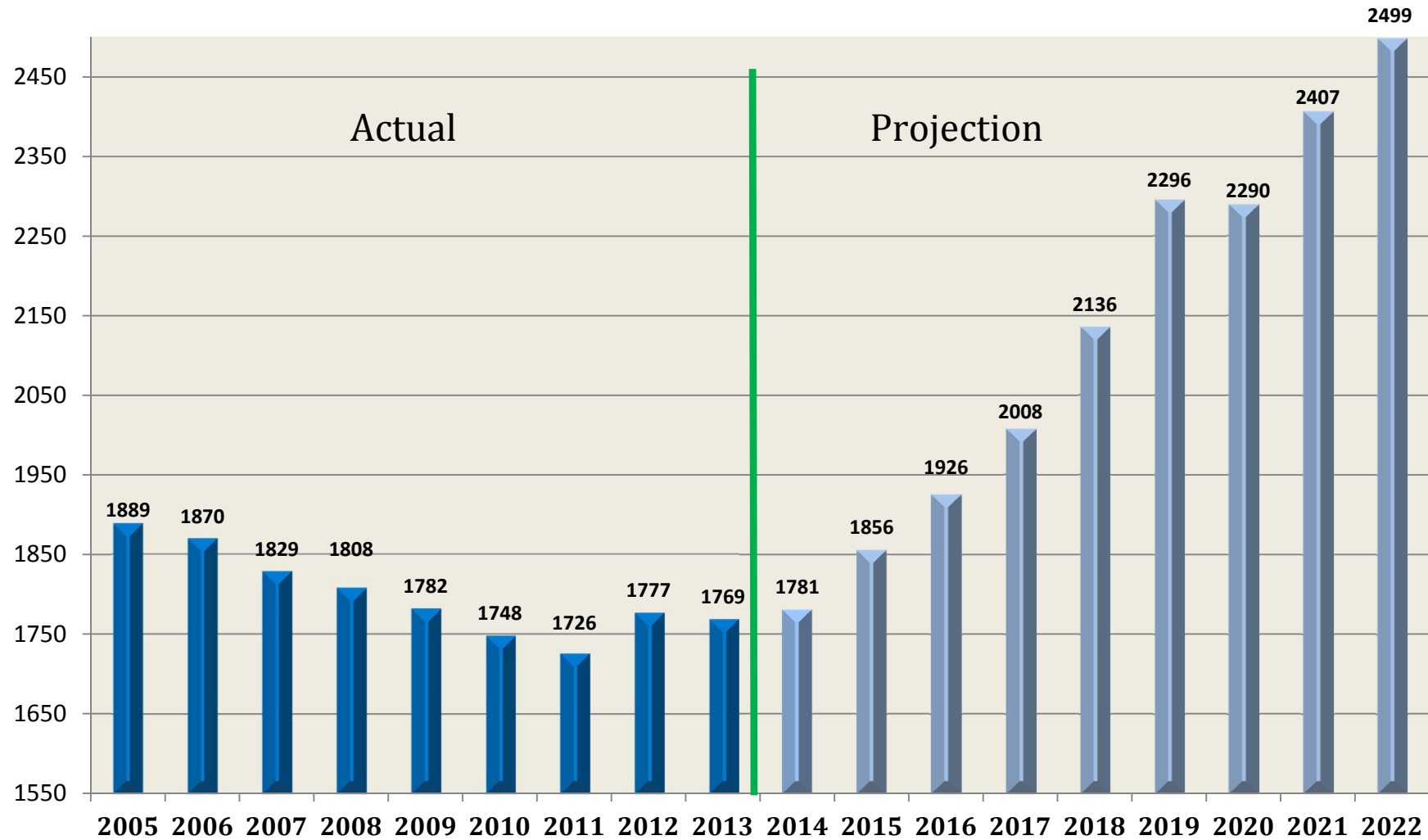
- = Not (Yet) Available

The Public Schools of Brookline						
Space Needs / Options						
High School						
	FY14	FY15	FY16	FY17	FY18	FY22
BHS Expansion	-	-	-	-	*	
BHS	1770	1885	1977	2070	2185	2497
Annual Growth		+ 115	+ 92	+ 93	+ 115	
Total Growth vs. FY14					Total + 415	+ 727

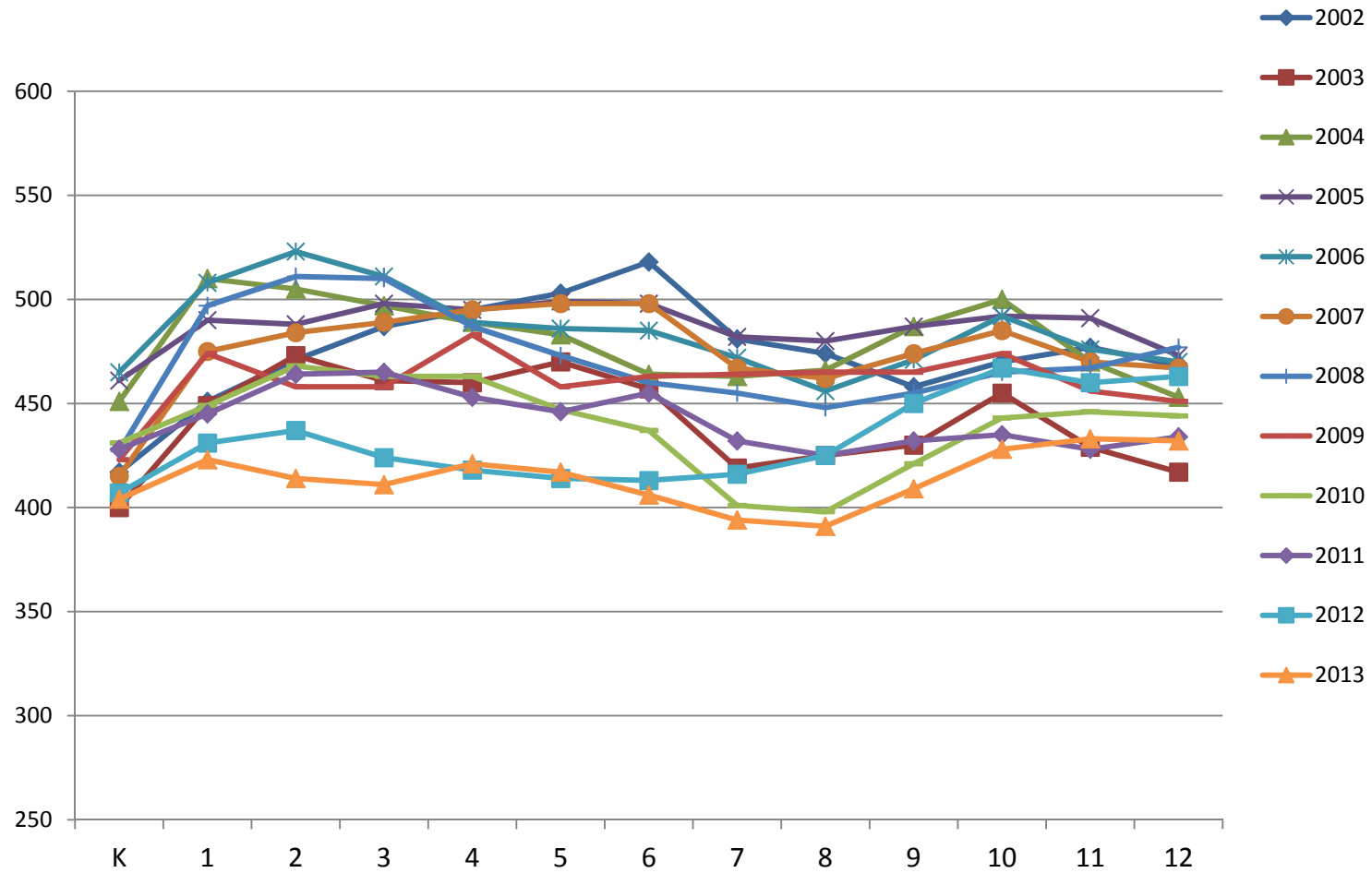
Long Term Plan

How to divide 2,497 - 2,500 kids - Second High School?

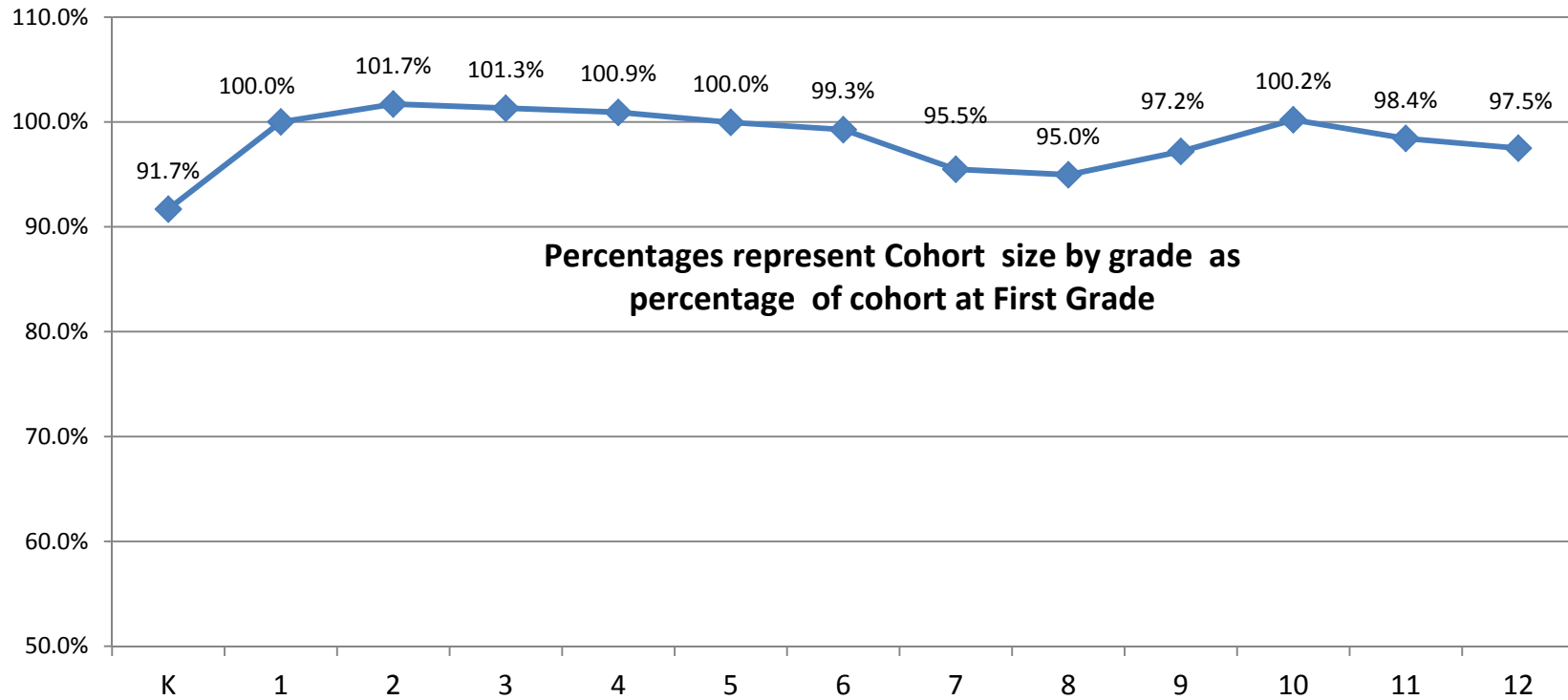
Brookline High School Enrollment 2005 - 2022



Cohort Enrollment FY02 - FY13



**Brookline Public Schools
Annual Cohort Retention Percentage
Eleven Year Average 2002- 2013**



BROOKLINE PRE-SCHOOL AND SCHOOL AGED POPULATION BY AGE, 2000 AND 2010

POPULATION BY AGE			POPULATION BY AGE GROUP			CHANGE: 2000-2010	
AGE	2000	2010	AGE GRP	2000	2010	POP.	%
Under 1	577	682					
1	552	617					
2	519	648					
3	509	653					
4	482	609	<5	2,639	3,209	570	21.6%
5	464	598					
6	478	644					
7	540	599					
8	499	609					
9	550	581	5-9	2,531	3,031	500	19.8%
10	534	548					
11	563	528					
12	553	520					
13	570	509					
14	482	501	10-14	2,702	2,606	-96	-3.6%
15	572	511					
16	536	532					
17	523	519					
18	530	586	15-18	2,161	2,148	-13	-0.6%
TOTAL	10,033	10,994					
TOTAL, 5-18	7,394	7,785					

AGE OF BROOKLINE'S POPULATION; OTHER COMPARISONS OF INTEREST - 2000 AND 2010

AGE GROUP	2000		2010		CHANGE: 2000-2010	
	No.	%	No.	%	POP.	%
<5	2,639	4.6%	3,209	5.5%	570	21.6%
5-9	2,531	4.4%	3,031	5.2%	500	19.8%
10-14	2,702	4.7%	2,606	4.4%	-96	-3.6%
15-19	2,706	4.7%	2,817	4.8%	111	4.1%
20-24	5,605	9.8%	6,618	11.3%	1,013	18.1%
25-29	7,373	12.9%	6,949	11.8%	-424	-5.8%
30-34	5,480	9.6%	5,079	8.6%	-401	-7.3%
35-39	4,541	8.0%	4,201	7.2%	-340	-7.5%
40-44	3,888	6.8%	3,495	6.0%	-393	-10.1%
45-49	3,847	6.7%	3,325	5.7%	-522	-13.6%
50-54	3,923	6.9%	3,220	5.5%	-703	-17.9%
55-59	2,819	4.9%	3,366	5.7%	547	19.4%
60-64	1,873	3.3%	3,322	5.7%	1,449	77.4%
65-69	1,698	3.0%	2,259	3.8%	561	33.0%
70-74	1,602	2.8%	1,587	2.7%	-15	-0.9%
75-79	1,391	2.4%	1,239	2.1%	-152	-10.9%
80-84	1,082	1.9%	1,087	1.9%	5	0.5%
85+	1,335	2.3%	1,322	2.3%	-13	-1.0%
TOTAL	57,035	100.0%	58,732	100%	1,697	3.0%

Student Residential Distribution
by Town Wide Residential Ownership/Rental Demographic

Owner Occupied	Reside in Condominium	Rental Property	Total #
2564	1868	2079	6511

Owner Occupied	Reside in Condominium	Rental Property	Total %
39.4%	28.7%	31.9%	100.0%

*Source: Town of Brookline GIS / Based on Residential Tax Exemption

Student Residential Distribution by Town Wide Residential Ownership/Rental Demographic

School	Owner Occupied	Reside in Condominium	Rental Property	Total #
Baker	638	29	413	1080
Devotion	319	390	345	1054
Driscoll	166	160	191	517
Heath	403	66	102	571
Lawrence	189	282	233	704
Lincoln	203	271	355	829
Pierce	348	416	288	1052
Runkle	298	254	152	704
Town Wide	2564	1868	2079	6511

School	Owner Occupied	Reside in Condominium	Rental Property	Total %
Baker	59.1%	2.7%	38.2%	100.0%
Devotion	30.3%	37.0%	32.7%	100.0%
Driscoll	32.1%	30.9%	36.9%	100.0%
Heath	70.6%	11.6%	17.9%	100.0%
Lawrence	26.8%	40.1%	33.1%	100.0%
Lincoln	24.5%	32.7%	42.8%	100.0%
Pierce	33.1%	39.5%	27.4%	100.0%
Runkle	42.3%	36.1%	21.6%	100.0%
Town Wide	39.4%	28.7%	31.9%	100.0%

*Source: Town of Brookline GIS / Based on Residential Tax Exemption

Student Residential Distribution Owner Occupied/Rental

	Own	Own - Condo	Total Own	Rent	Rent - Condo	Total Rent	Total
Town Wide	2564	1172	3736	2079	696	2775	6511

	Own	Own - Condo	% Own	Rent	Rent - Condo	% Rent	Total %
Town Wide	39.4%	18.0%	57.4%	31.9%	10.7%	42.6%	100%

*Source: Town of Brookline GIS / Based on Residential Tax Exemption

Student Residential Distribution Owner Occupied/Rental

School	Own	Own - Condo	Total Own	Rent	Rent - Condo	Total Rent	Total
Baker	638	16	654	413	13	426	1080
Devotion	319	243	562	345	147	492	1054
Driscoll	166	106	272	191	54	245	517
Heath	403	49	452	102	17	119	571
Lawrence	189	153	342	233	129	362	704
Lincoln	203	147	350	355	124	479	829
Pierce	348	289	637	288	127	415	1052
Runkle	298	169	467	152	85	237	704
Town Wide	2564	1172	3736	2079	696	2775	6511

School	Own	Own - Condo	% Own	Rent	Rent - Condo	% Rent	Total %
Baker	59.1%	1.5%	60.6%	38.2%	1.2%	39.4%	100%
Devotion	30.3%	23.0%	53.3%	32.7%	14.0%	46.7%	100%
Driscoll	32.1%	20.5%	52.6%	36.9%	10.4%	47.4%	100%
Heath	70.6%	8.6%	79.2%	17.9%	3.0%	20.8%	100%
Lawrence	26.8%	21.7%	48.5%	33.1%	18.4%	51.5%	100%
Lincoln	24.5%	17.8%	42.3%	42.8%	14.9%	57.7%	100%
Pierce	33.1%	27.5%	60.6%	27.4%	12.1%	39.4%	100%
Runkle	42.3%	23.9%	66.3%	21.6%	12.1%	33.7%	100%
Town Wide	39.4%	18.0%	57.4%	31.9%	10.7%	42.6%	100%

*Source: Town of Brookline GIS / Based on Residential Tax Exemption

OTHER COMPARISONS OF INTEREST

All children <18 (aged up to 17)	9,503		10,408		905	9.5%
Total Households	25,594	100%	25,092	100%	-502	-0.02
All Households w/children <18	5,805	22.7%	6,075	24.2%	270	4.7%
- Families w/own children < 18	5,615	21.9%	5,888	23.5%	273	4.9%
- - Headed by husband-wife	4,481	17.5%	4,762	19.0%	281	6.3%
- - Headed by female only	962	3.8%	911	3.6%	-51	-5.3%
-- Headed by male only	172	0.7%	215	0.9%	43	25.0%
--Other Households w/children<18	190	0.7%	187	0.7%	-3	-1.6%
Children <18 in hhld						
Relatives but not children of householder)	244	0.4%	239	0.4%	-5	-2.0%
Non-relatives <18 in hhld	?		37	0.1%		
Average family size	2.86		2.91		0.05	1.7%
Average no of <18 in hhlds with <18	1.64		1.71		0.08	4.7%

Town of Brookline Planning Department

*See Notes

*Notes to Other Comparisons of Interests

In 2010, at 6,075, there were 270 more households with children under age 18 in Brookline than there were in 2000. In addition, the even slight increase in number of children per household with children -- from 1.64 to 1.71 -- would account for over 425 additional children in 2010. Together these would account for an additional 905 children in Brookline.

At first glance, this increase, especially at the lowest ages, would seem to be out of sync with the Town's lower numbers of adults of traditional child-rearing age, and higher numbers of adults in older middle age/young senior brackets in 2010. The data suggests that, compared to 2000, in 2010 a larger proportion of the former cohort may have been raising children and/or there was a greater representation of older parents.

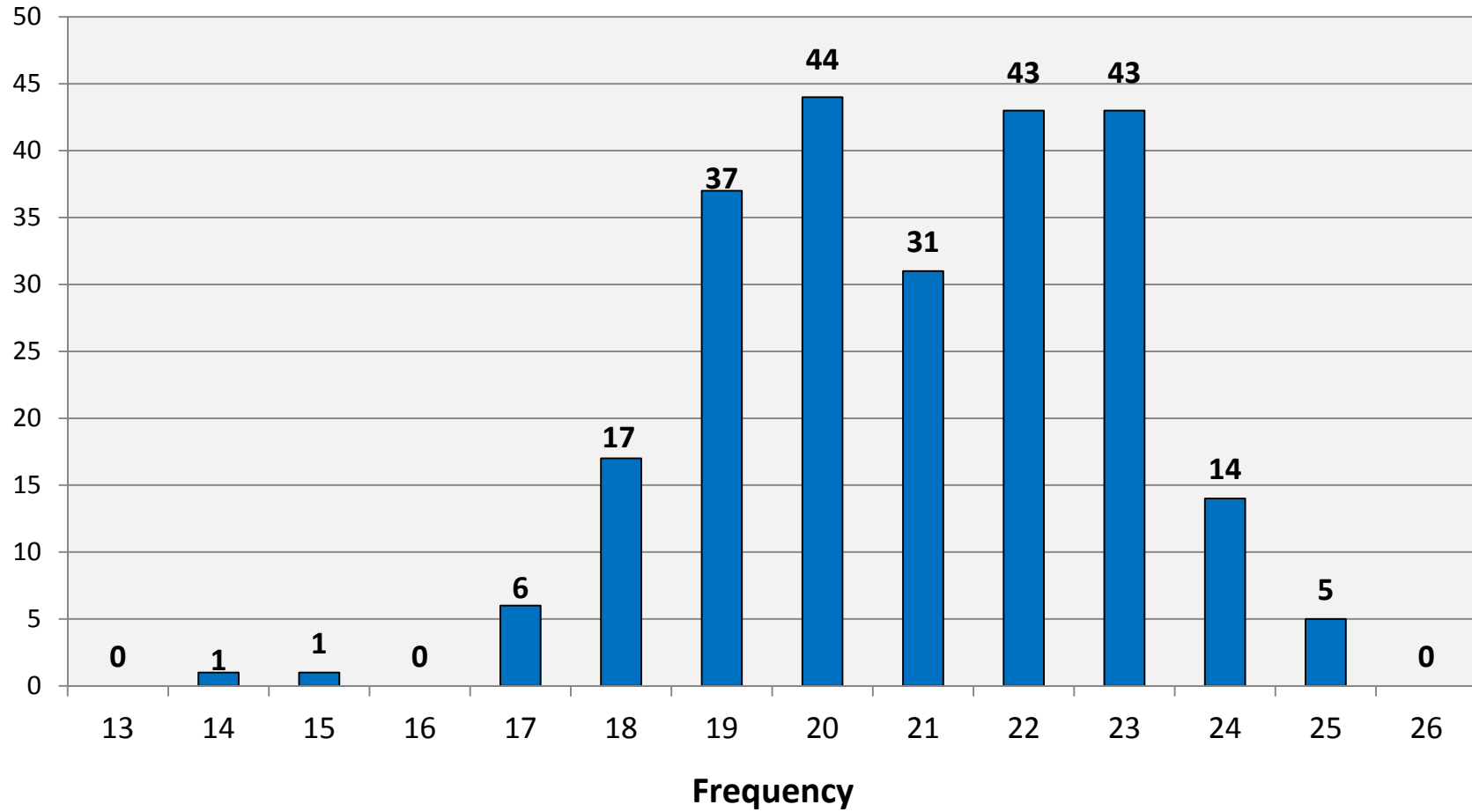
Brookline Public School Elementary Class Size FY13

10/1/2012

Frequency Count /Average Class Size

Grade	# Sections	Enrollment	Average	13	14	15	16	17	18	19	20	21	22	23	24	25	26		
K	32	666	20.81	0	0	0	0	1	2	5	8	3	5	7	1	0	0	32	666
1	30	633	21.10	0	0	0	0	0	1	7	4	5	4	7	2	0	0	30	633
2	26	539	20.73	0	0	0	0	0	1	6	6	4	5	3	1	0	0	26	539
3	29	651	22.45	0	0	0	0	0	0	0	3	4	7	9	4	2	0	29	651
4	27	574	21.26	0	0	0	0	0	1	1	6	6	9	3	1	0	0	27	574
5	25	517	20.68	0	0	0	0	0	1	6	7	2	5	3	1	0	0	25	517
6	26	549	21.12	0	0	0	0	2	1	5	3	2	3	7	2	1	0	26	549
7	25	492	19.68	0	1	0	0	2	6	6	3	1	2	1	1	2	0	25	492
8	22	446	20.27	0	0	1	0	1	4	1	4	4	3	3	1	0	0	22	446
Totals	242	5067	20.94	0	1	1	0	6	17	37	44	31	43	43	14	5	0	242	
K-3	117	2489	21.27	0	0	0	0	1	4	18	21	16	21	26	8	2	0	117	2489

Frequency Count /Average Class Size



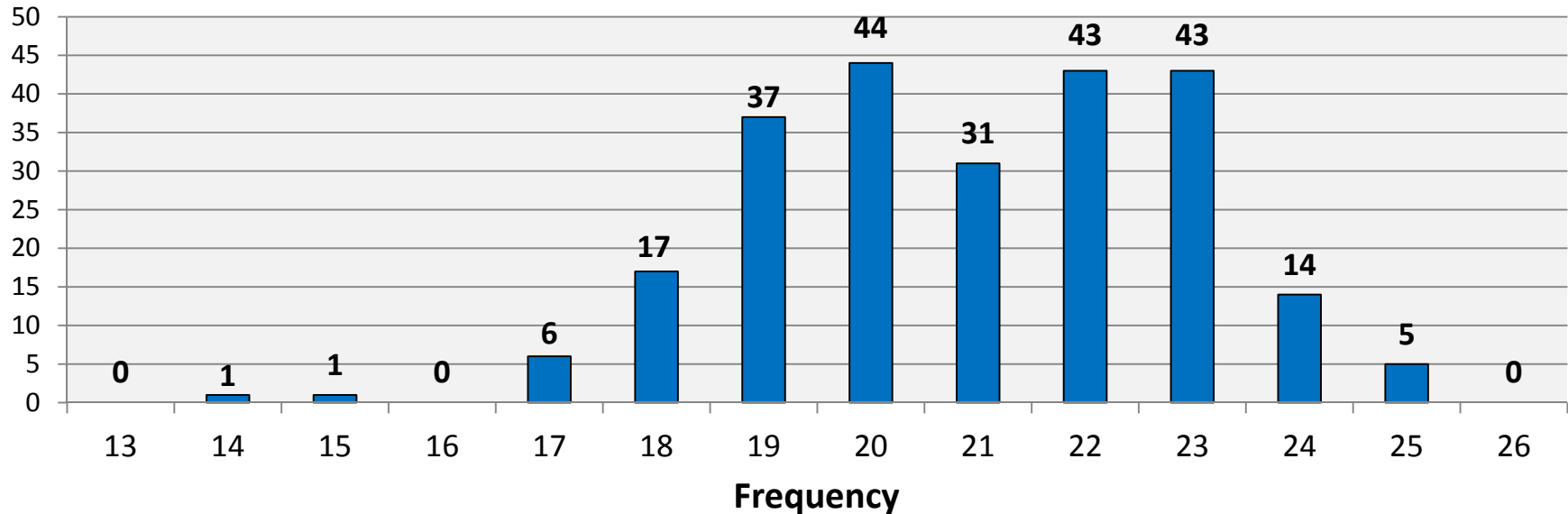
Brookline Public School Elementary Class Size FY13

10/1/2012

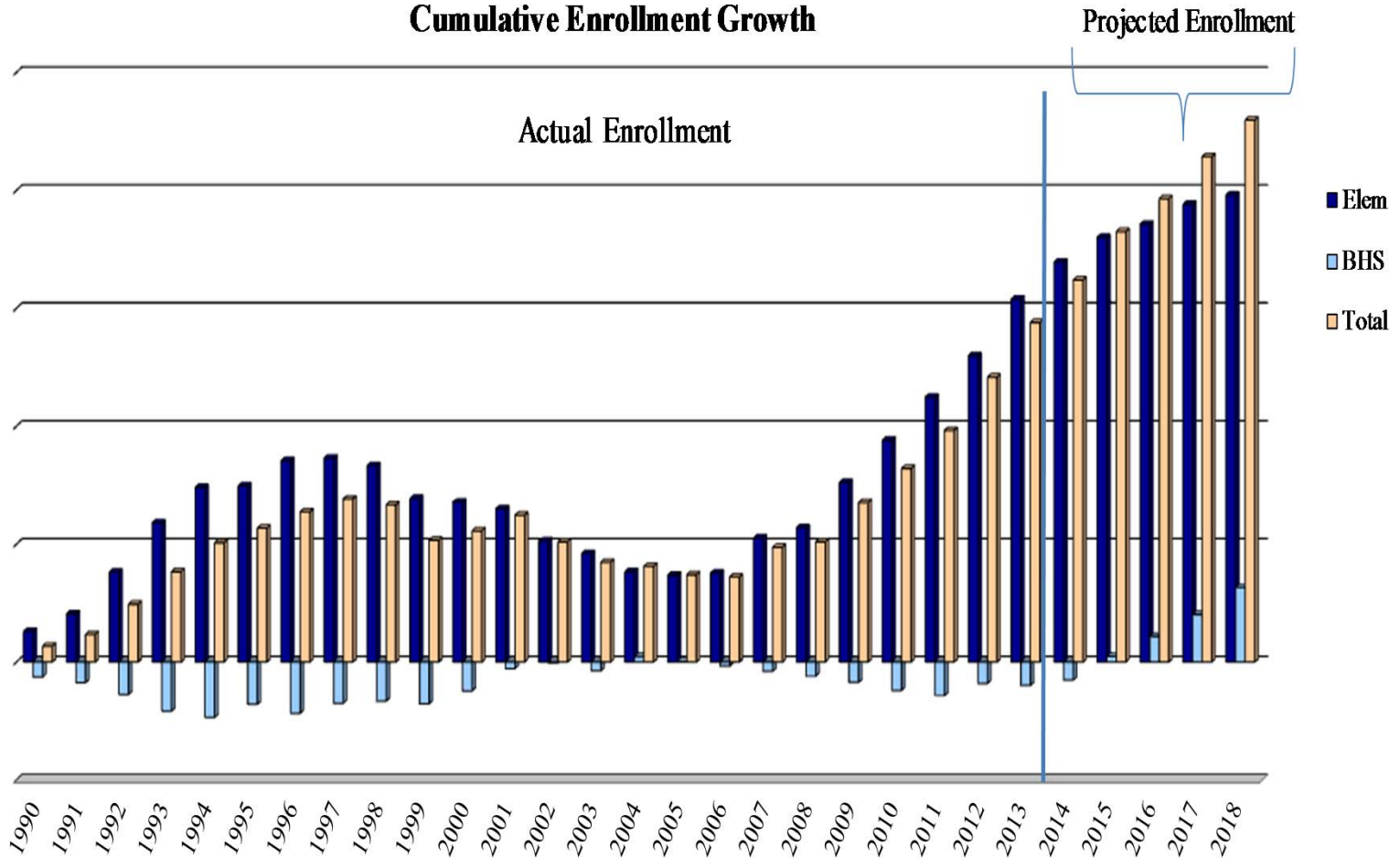
Frequency Count /Average Class Size

Grade	# Sections	Enrollment	Average	13	14	15	16	17	18	19	20	21	22	23	24	25	26		
K	32	666	20.81	0	0	0	0	1	2	5	8	3	5	7	1	0	0	32	666
1	30	633	21.10	0	0	0	0	0	1	7	4	5	4	7	2	0	0	30	633
2	26	539	20.73	0	0	0	0	0	1	6	6	4	5	3	1	0	0	26	539
3	29	651	22.45	0	0	0	0	0	0	0	3	4	7	9	4	2	0	29	651
4	27	574	21.26	0	0	0	0	0	1	1	6	6	9	3	1	0	0	27	574
5	25	517	20.68	0	0	0	0	0	1	6	7	2	5	3	1	0	0	25	517
6	26	549	21.12	0	0	0	0	2	1	5	3	2	3	7	2	1	0	26	549
7	25	492	19.68	0	1	0	0	2	6	6	3	1	2	1	1	2	0	25	492
8	22	446	20.27	0	0	1	0	1	4	1	4	4	3	3	1	0	0	22	446
Totals	242	5067	20.94	0	1	1	0	6	17	37	44	31	43	43	14	5	0	242	
K-3	117	2489	21.27	0	0	0	0	1	4	18	21	16	21	26	8	2	0	117	2489

Frequency Count /Average Class Size



The Public Schools of Brookline Cumulative Enrollment Growth



	1990	1991	1992	1993	1994	1995	1996	1997	1998	1999	2000	2001	2002	2003	2004	2005	2006	2007	2008	2009	2010	2011	2012	2013	2014	2015	2016	2017	2018
ELEM TOTAL	3,648	3,722	3,900	4,109	4,259	4,265	4,372	4,383	4,351	4,212	4,196	4,168	4,031	3,978	3,901	3,886	3,896	4,054	4,098	4,290	4,469	4,652	4,827	5,067	5,224	5,329	5,384	5,469	5,509
H.S. TOTAL	1,824	1,800	1,750	1,679	1,652	1,708	1,670	1,713	1,721	1,710	1,765	1,860	1,884	1,850	1,910	1,889	1,870	1,829	1,808	1,782	1,748	1,726	1,777	1,769	1,792	1,892	1,977	2,070	2,185
ELEM & H.S.	5,472	5,522	5,650	5,788	5,911	5,973	6,042	6,096	6,072	5,922	5,961	6,028	5,915	5,828	5,811	5,775	5,766	5,883	5,906	6,072	6,217	6,378	6,604	6,836	7,016	7,221	7,361	7,539	7,694

Historical Materials Fee FY10 – FY13

Year	Kdgn.	1 st Grade	2nd Grade	3rd Grade	4th Grade	5th Grade	6th Grade	7th Grade	8th Grade	Fresh.	Soph.	Juniors	Seniors	Total (Year)
FY10	15	20	13	14	10	7	8	11	4	7	8	13	6	136
FY11	16	14	17	14	16	8	7	7	12	7	6	7	11	142
FY12	20	16	15	19	14	16	8	8	8	13	7	5	7	156
FY13	23	21	15	14	18	13	16	8	8	9	12	6	5	168

Historical METCO Students FY10 – FY13

Year	Kdgn.	1st Grade	2nd Grade	3rd Grade	4th Grade	5th Grade	6th Grade	7th Grade	8th Grade	Fresh.	Soph.	Juniors	Seniors	Total (Year)
FY10	21	28	27	27	16	31	20	16	17	22	24	30	20	299
FY11	21	21	28	27	27	17	34	19	16	16	23	23	30	302
FY12	21	21	19	28	27	27	18	34	20	20	16	23	23	297
FY13	20	23	20	19	29	28	25	19	34	24	19	16	19	295

FY13 – Town/School Employees Students

	Kdgn.	1st Grade	2nd Grade	3rd Grade	4th Grade	5th Grade	6th Grade	7th Grade	8th Grade	Fresh.	Soph.	Juniors	Seniors	Totals
Baker	5	5	5	4	4	2	2	2	0					29
Devotion	0	1	1	0	1	0	0	1	1					5
Driscoll	2	1	1	1	0	3	0	0	1					9
Heath	4	6	4	1	4	0	2	0	0					21
Lawrence	0	0	0	1	1	1	1	0	1					5
Lincoln	4	0	0	5	2	3	4	1	2					21
Pierce	4	2	4	0	4	1	3	1	2					21
Runkle	4	6	0	2	2	3	4	3	1					25
BHS										9	12	6	5	32
Totals	23	21	15	14	18	13	16	8	8	9	12	6	5	168

Total Number of Employees Students	168
------------------------------------	-----

FY13 – METCO Students

	Kdgn.	1st Grade	2nd Grade	3rd Grade	4th Grade	5th Grade	6th Grade	7th Grade	8th Grade	Fresh.	Soph.	Juniors	Seniors	Total (School)
Baker	6	5	5	4	5	3	2	2	4					36
Devotion	3	2	1	2	3	5	3	2	6					27
Driscoll	3	2	3	4	5	5	1	2	7					32
Heath	0	3	2	2	2	2	4	3	3					21
Lawrence	2	1	2	5	3	2	3	3	5					26
Lincoln	4	3	2	2	2	4	3	3	0					23
Pierce	2	4	4	0	6	2	6	4	5					33
Runkle	0	3	1	0	3	5	3	0	4					19
BHS														0
										24	19	16	19	78
Totals	20	23	20	19	29	28	25	19	34	24	19	16	19	295

Total Number of METCO Students	295
--------------------------------	-----