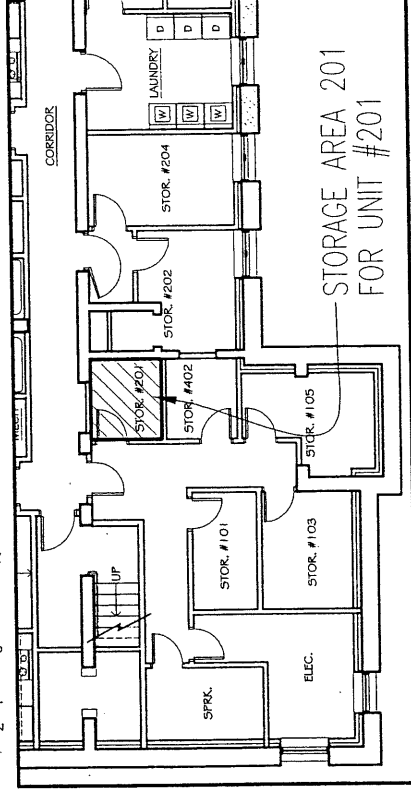
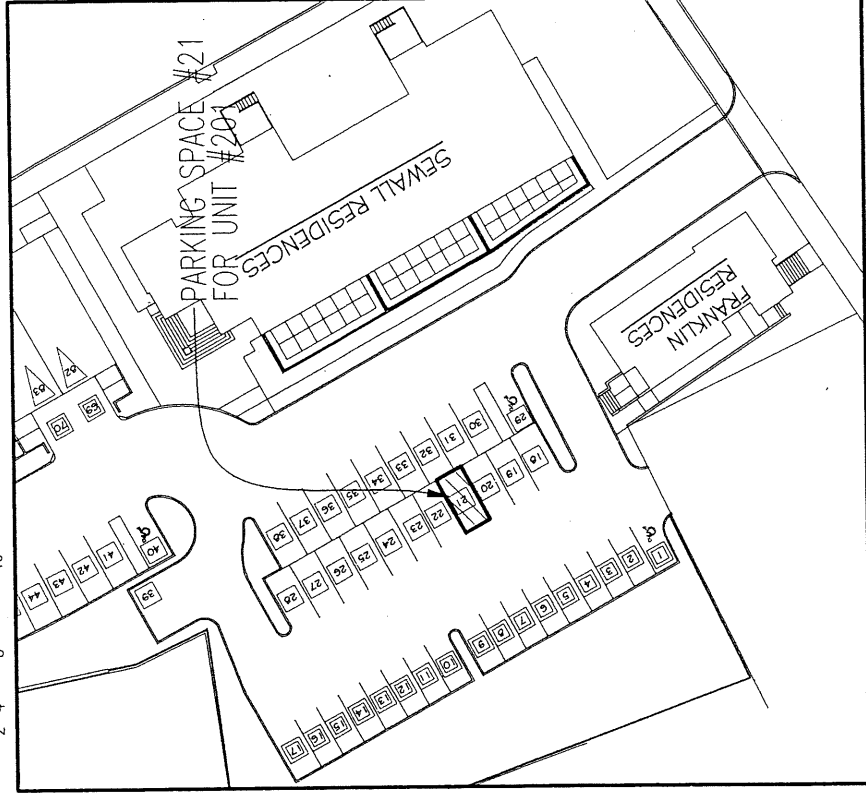


SECOND FLOOR



FIRST FLOOR



UNIT PARKING PLAN (REFER TO MASTER DEED)

no scale

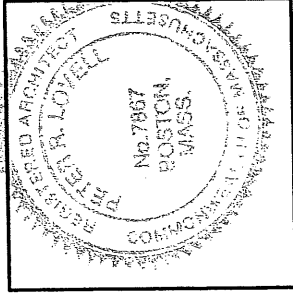
UNIT 201

Kendall Crescent
A PARENCORP COMMUNITY

SEWALL RESIDENCES CONDOMINIUM

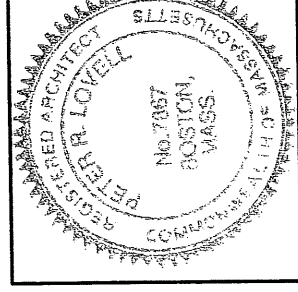
275 CYPRESS STREET
BROOKLINE, MA

I hereby certify that this plan was prepared in accordance with the rules and regulations of the Massachusetts Registry of Deeds and chapter 183A of the Massachusetts General Laws, current as of July 12, 2000. The residential Condominium indicated is located in the development known as The Sewall Residences Condominium at 275 Cypress street Brookline, Massachusetts pursuant to a Master Deed, dated July 13, 2000, as recorded, Norfolk County Registry of Deeds Book No. 74524 Page No. 282, as amended.



Signed Peter R. Lovell
Date 11/10/00

I hereby certify that this plan shows unit 201 being conveyed and the immediately adjoining units, that it fully and accurately depicts the layout of the unit, it's location, dimensions, approximate area, main entrance and immediate common area to which it has access, as built.



Signed Peter R. Lovell
Date 11/12/00

LIVING UNIT AREA 661 S.F.
STORAGE UNIT AREA 40 S.F.
TOTAL UNIT AREA 701 S.F.



Notes:

1. The overall unit dimensions were taken from the interior face of the gypsum wallboard.
2. Unit square footage includes the interior unit and the storage area.