

cityLift

CUSTOMIZED PARKING
SOLUTIONS

TAKE THE
SPACE
OUT OF
PARKING.

ABOUT CITYLIFT PARKING

- Designs, manufactures, installs, and services **automated parking lift systems**
- A unique US company
 - Fully integrated manufacturing operation with 58,000 spaces installed and
 - 4th year in US; 30 years experience in 13 countries overall
 - Acquired Leimeng Mechanical & Electrical Co., Ltd., the leading Chinese manufacturer with over 58,000 spaces installed and 26+ years of technology experience
 - Broad product range designed for US consumers and US regulations
 - Not a reseller of 3rd party product
 - US investors with deep real estate backgrounds, and
- Over 100 projects in US underway
- Headquartered in Oakland, CA
- US offices in Oakland, Los Angeles, Miami, and Boston

Board Members

2 CITYLIFT'S ADVISORY BOARD MEMBERS

Below are CityLift advisory board members that are very recognizable and highly respected names in the architectural, construction, and engineering fields.

David Gensler

Served as co-CEO of Gensler, the world's largest architecture firm, for 23 years before retiring in 2015. Mr. Gensler was involved in leading the firm through a period of rapid growth, including the construction of some of the world's most significant buildings, including Shanghai Tower, the world's second tallest building.

"CityLift is a leader in the rapidly growing automated parking industry and we can expect to see automated parking becoming as common in the US as it is in Asia and Europe"



Andy Ball

Was the founder and CEO of Webcor for 18 years, as well as President of Suffolk Construction. He is currently President of RAD Urban, one of the leaders in modular construction in the US.

"Automated parking is one of the most needed solutions in today's construction industry. Most buildings can no longer justify building conventional parking and this provides the means for developers and builders to get their projects built," says Andy Ball. "CityLift is a local Bay Area company with a large national presence and I'm equally excited to be a part of its growth"



Barbara Boxer

Served as US Senator for California from 1993 to 2017. During her tenure she served as Chairwoman of the Senate Environment and Public Works Committee and sat on the Committee

for Commerce, Science, and Transportation, and was a catalyst for public transit and for environmental responsibility. *"Public agencies are facing increasingly scarce and more expensive land to meet their parking needs," says former United States Senator Barbara Boxer. "CityLift's automated parking systems provide these agencies with cost-effective and environmentally friendly solutions to this vexing parking challenge."*



CITYLIFT'S APPROACH

TODAY

- **CityLift is a technology driven company that is building a one-stop shop** for everything in automated parking
 - **Enabled by an integrated technology backbone** and staffed with experienced professionals
 - **Only firm with integrated capabilities** – from custom design all the way to post-install service
 - Core skills:
 - Product design and engineering
 - Customized manufacturing
 - Software development and parking systems integration
 - Product delivery and installation
 - Monitoring installed systems remotely
 - Servicing

FUTURE

- **Fully integrated into the parking ecosystem** – parking app, parking management systems and autonomous vehicle fleet operators
- **Make it more attractive for developers to build and hold parking assets**
- **Deliver “parking as a service”** – build, own and operate garages for customers
- Expand services in design consulting and parking network optimization
- Grow in the US and internationally

CASE STUDIES



39 A STREET SOUTH BOSTON, MA



39 A STREET SOUTH BOSTON, MA

Building Type: Residential

Solution: 2 Level Puzzle

Parking Levels: 2

Number of Spaces: 24

Architect: Tim Johnson

Developer: East Way Development

Completion Date: 2018

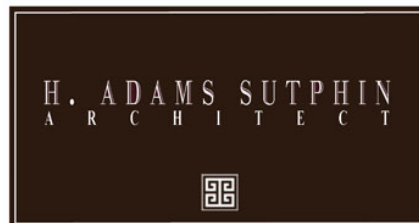


100 A STREET SOUTH BOSTON, MA



100 A STREET SOUTH BOSTON, MA

Building Type: [Residential](#)
Solution: [3 Level Puzzle with Pit](#)
Parking Levels: [3](#)
Number of Spaces: [12](#)
Architect: [Sutphin Architects](#)
Developer: [Oranmore](#)
General Contractor: [Brenco Construction](#)
Completion Date: [2018](#)



93 W BROADWAY SOUTH BOSTON, MA



93 W BROADWAY
SOUTH BOSTON, MA

Building Type: Residential
Solution: 3 Level Puzzle Tandem with Pit
Parking Levels: 3
Number of Spaces: 80
Architect: Stefanov Architects
Developer: Oranmore
General Contractor: Brenco Construction
Completion Date: 2018

STEFANOV ARCHITECTS



citylift

89 BRIGHTON AVE ALLSTON, MA



89 BRIGHTON AVE ALLSTON, MA

Building Type: Residential

Solution: 2 Level Puzzle

Parking Levels: 2

Number of Spaces: 26

Architect: PCA

Developer: Eden Properties

General Contractor: Cranshaw Construction

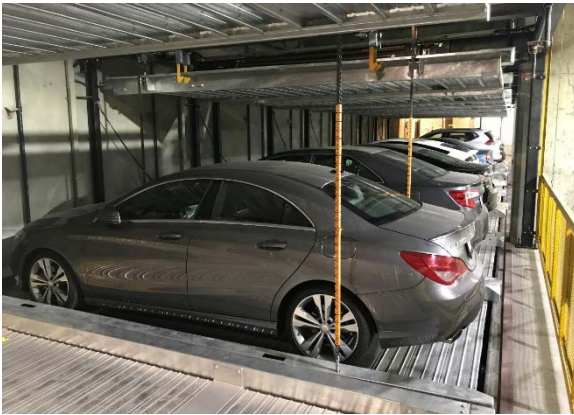
Completion Date: 2018





BROADWAY/GRAND PUBLIC GARAGE

ADDRESS: 438 WEST GRAND AVE, OAKLAND, CA
CONFIGURATION: 2-LEVEL PUZZLE
NUMBER OF SPACES: 30
BUILDING TYPE: PUBLIC GARAGE (RETROFIT)
COMPLETION DATE: 2015



MAXWELL APARTMENTS

ADDRESS: 1801 JEFFERSON ST, OAKLAND, CA
CONFIGURATION: 3-LEVEL PUZZLE W/PIT
NUMBER OF SPACES: 75
BUILDING TYPE: RESIDENTIAL (NEW CONSTRUCTION)
COMPLETION DATE: 2017



HIVE TOWER

ADDRESS: 2335 BROADWAY ST, OAKLAND, CA
CONFIGURATION: TOWER (FULLY-AUTOMATED)
NUMBER OF SPACES: 39
BUILDING TYPE: MIXED USE (NEW CONSTRUCTION)
COMPLETION DATE: 2018



45 Front Street
Marblehead, Ma. 01945

WWW.CITYLIFTPARKING.COM
844.388.0424

Oakland | LOS ANGELES | MIAMI |
BOSTON

citylift