



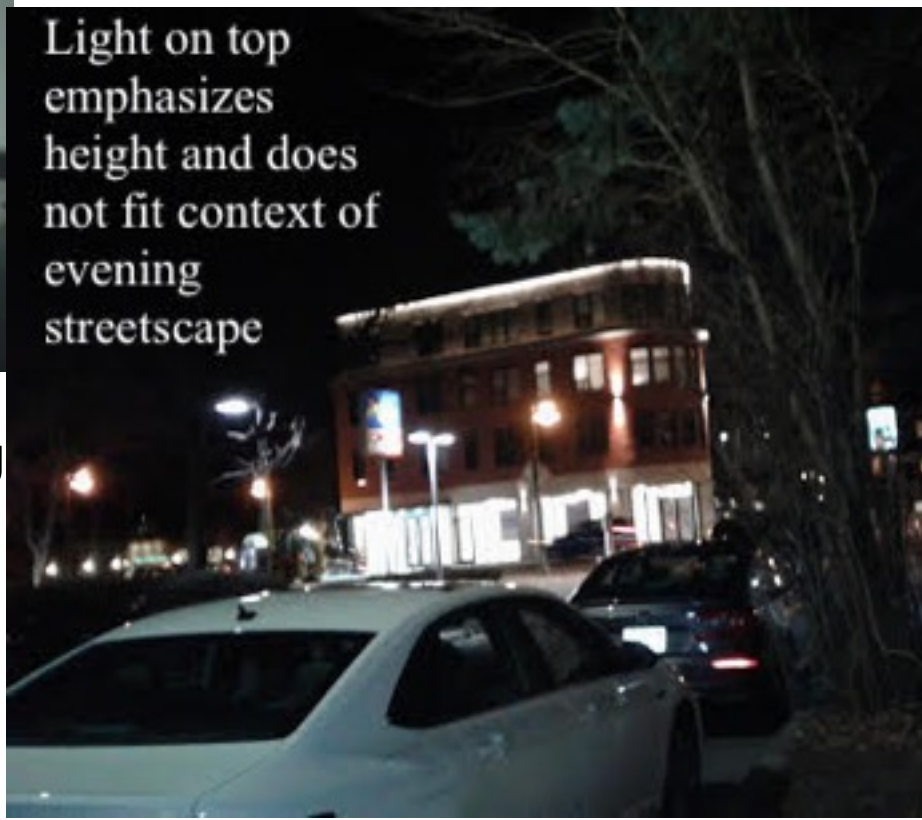
Doesn't look like UPS truck would fit in loading zone



No privacy to abutter - not what developer promised



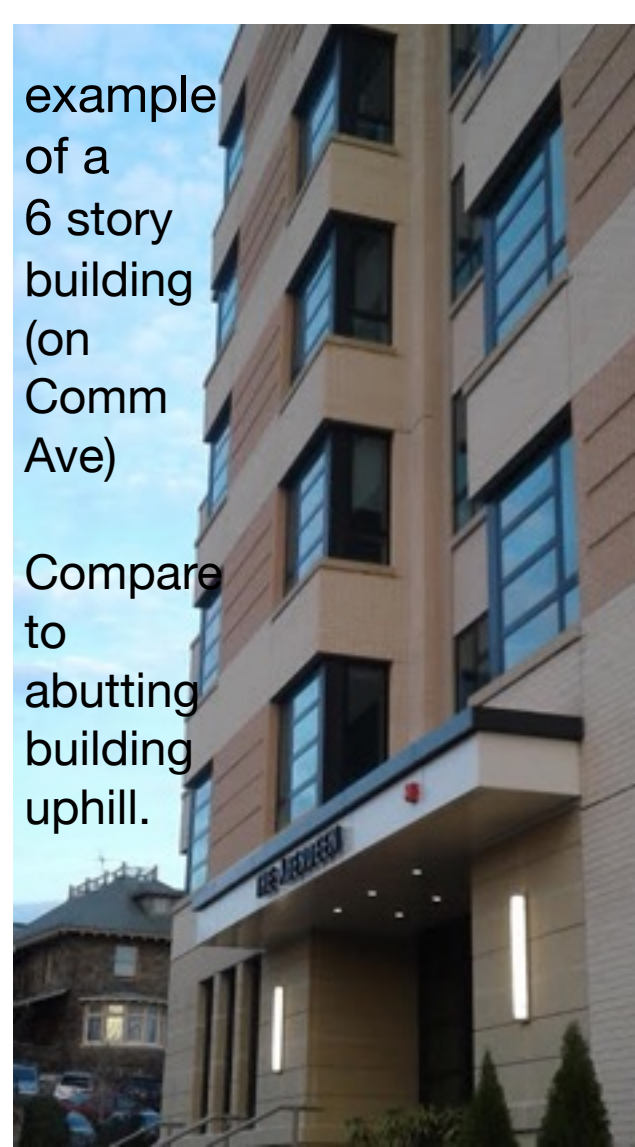
Trash at The Calvin in loading zone instead of in garage as per developer's plan



Light on top emphasizes height and does not fit context of evening streetscape

example
of a
6 story
building
(on
Comm
Ave)

Compare
to
abutting
building
uphill.



sun reflects off
mechanicals on top of
455 Harvard
and into driver's eyes



All parked up on Russell
Street next street over from
Kenwood