

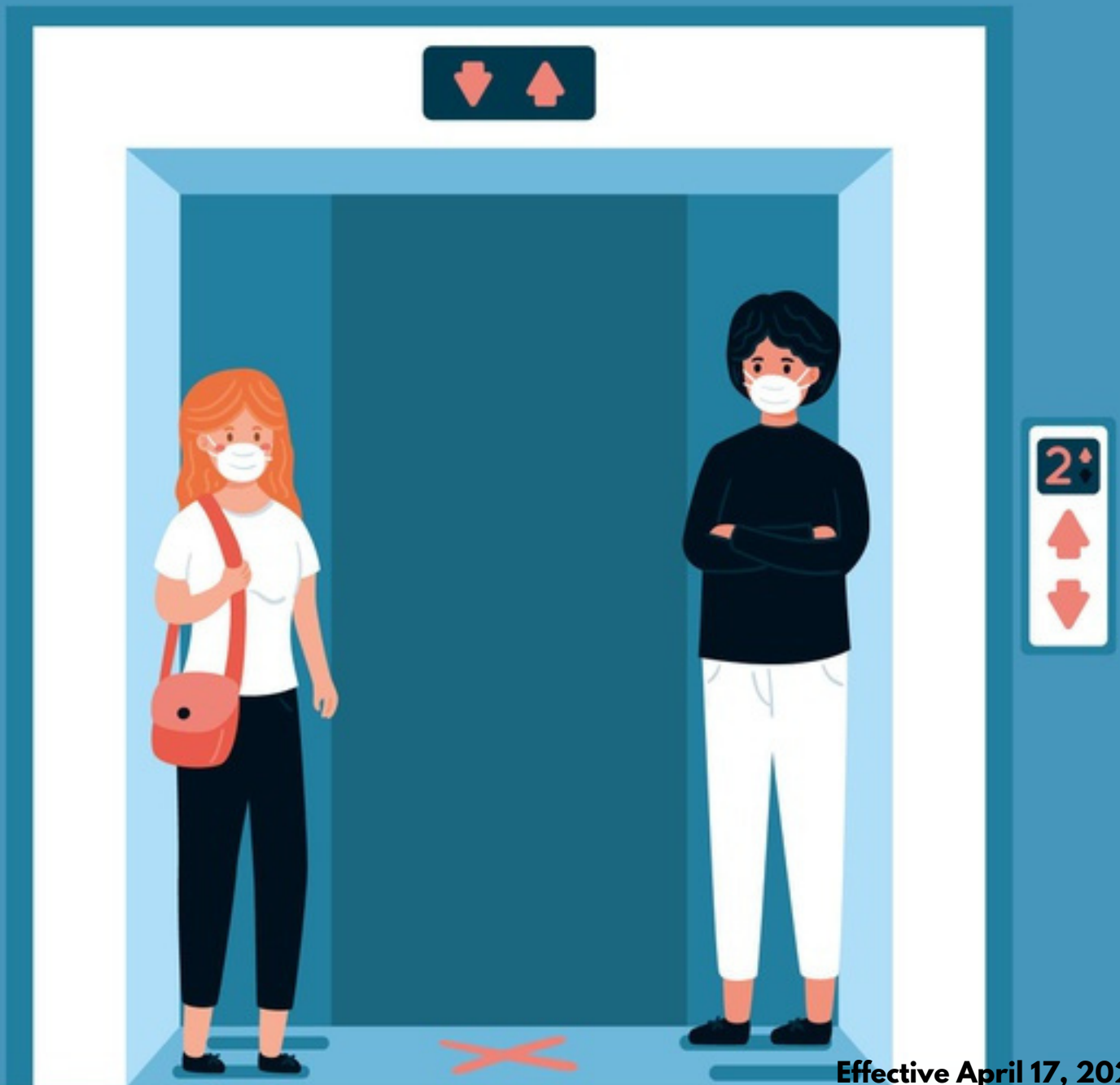
# GOING UP?

KEEP YOUR DISTANCE AND WEAR  
YOUR MASK.

Protect yourself and others from COVID-19!



By order of the Brookline Department of Public Health  
FACE COVERINGS ARE MANDATORY  
IN ELEVATORS.



Effective April 17, 2020

Dr. Swannie Jett, Director of Public Health