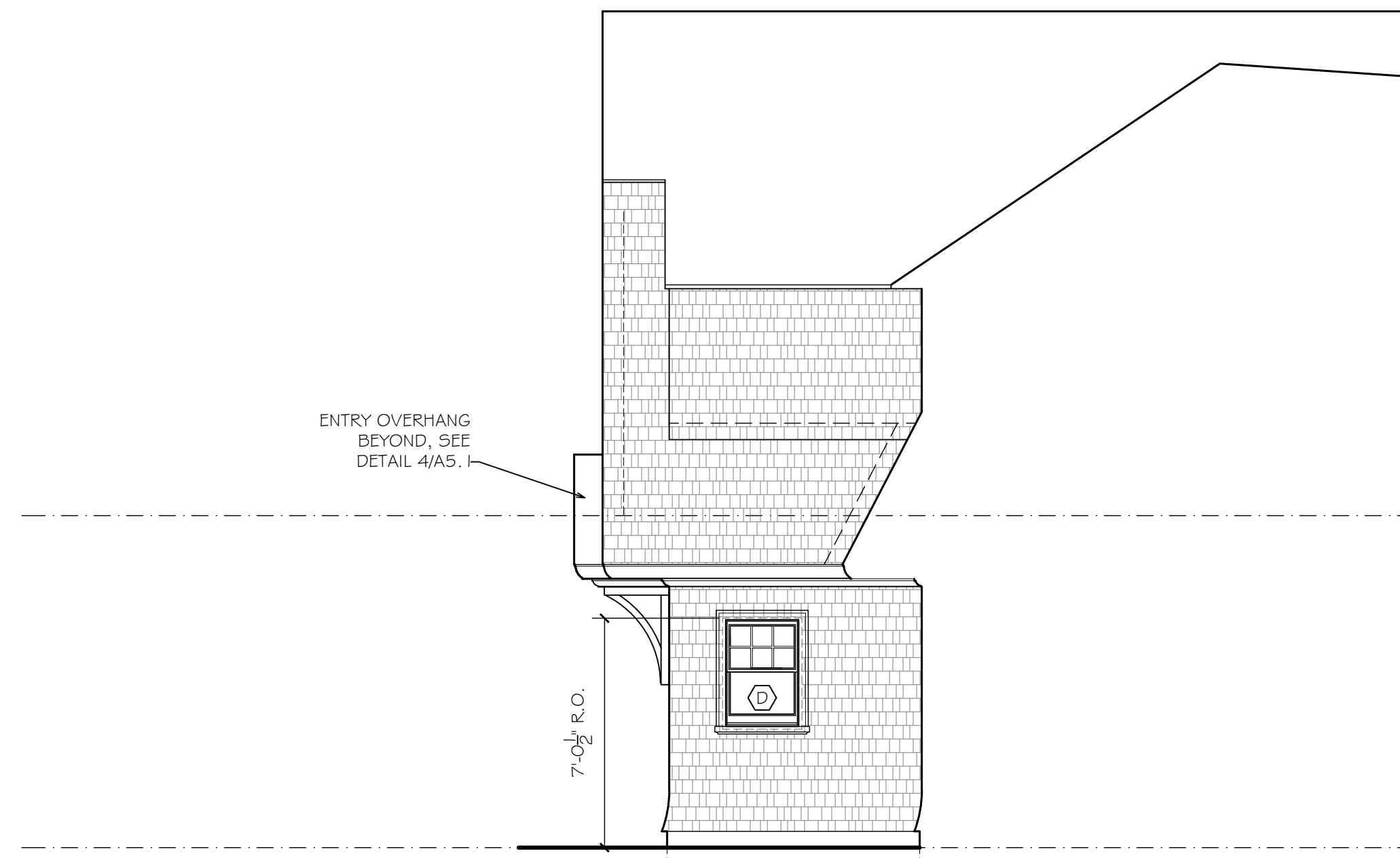


1 SOUTH ELEVATION
SCALE: 1/4" = 1'-0"

2 WEST ELEVATION
SCALE: 1/4" = 1'-0"



3 WEST ELEVATION
SCALE: 1/4" = 1'-0"



1 NORTH ELEVATION: ADDITION
SCALE: 1/4" = 1'-0"