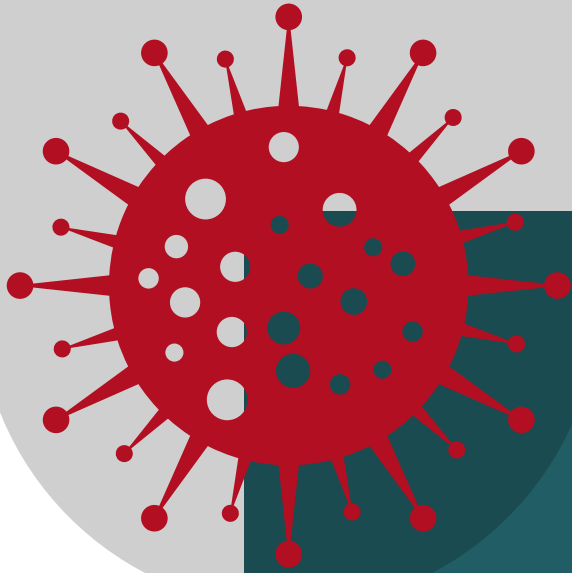




**BROOKLINE DEPARTMENT OF PUBLIC HEALTH AND HUMAN SERVICES**



# DON'T LET THE FLU RUIN THE HOLIDAYS

Get your flu shot at the Brookline Department of Public Health & Human Services - safe, easy, efficient.

*The best part of the holidays is simply being there. Don't miss your shot to stay healthy this season.*

**IS IT A COLD OR FLU?**

SIGNS AND SYMPTOMS	COLD	FLU
Symptom onset	Gradual	Abrupt
Fever	Rare	Usual
Aches	Slight	Usual
Chills	Uncommon	Fairly common
Fatigue, weakness	Sometimes	Usual
Sneezing	Common	Sometimes
Chest discomfort, cough	Mild to moderate	Common
Stuffy nose	Common	Sometimes
Sore throat	Common	Sometimes
Headache	Rare	Common

#FIGHT FLU

## FLU CLINIC DETAILS

Tuesday, December 5th | 2 p.m. to 4 p.m.  
11 Pierce St. | Denny Room  
Brookline, MA 02445

Appointments preferred, walk-ins welcome

\*High-dose available for 65+ years

\*FluMist available for 2-18 years

\*While supplies lasts



SCAN THE QR CODE TO REGISTER

## KEEP BROOKLINE SAFE THIS SEASON



Washing hands regularly



Avoiding touching face with unclean hands



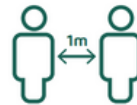
Wearing a mask



Sneezing and coughing in bent elbow



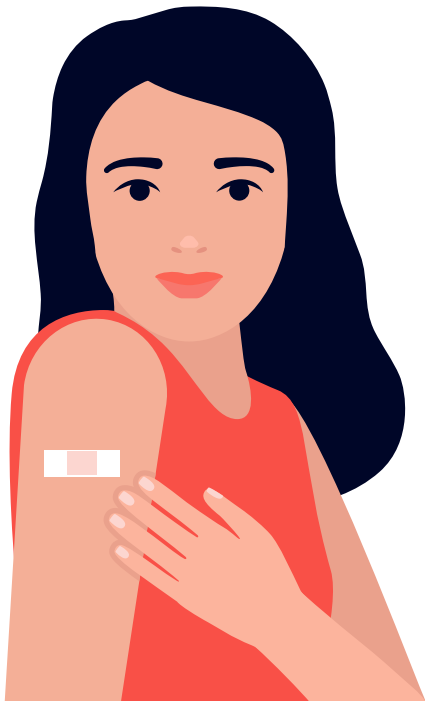
Disposing of used tissues



Keeping a safe distance



Avoiding crowded and non-ventilated places



Know an older adult who is homebound? Call **617-730-2320** to schedule an in-home flu vaccine appointment.